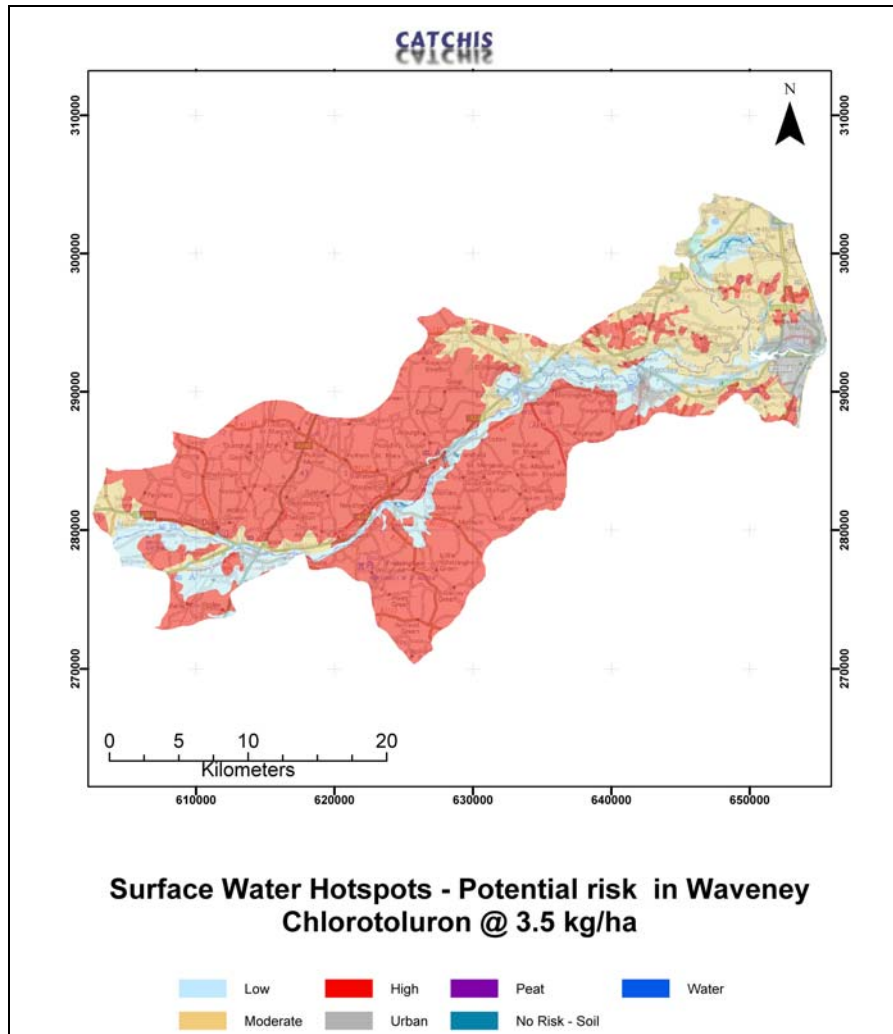


# Pesticide risk maps for targeting advice activity in Waveney catchment

March 2007



**CATCHIS**  
CATCHIS

developed by:

*Cranfield*  
UNIVERSITY

using



technology

## **Executive summary**

- Areas with high vulnerability to Chlorotoluron and IPU entering streams during peak drainflow after pesticide application cover most of the western and central parts of the catchments
- Soils in these areas are slowly permeable and require little rainfall to promote pesticide movement via by-pass flow to surface waters during the period when the soils are seasonally wetted up.
- Soils with peaty topsoils that abut the river have low risk due to greater pesticide sorption offered by the high organic matter content.

## **Background to the surface water model and vulnerability map**

The surface water vulnerability maps of the catchment is based on model estimations of the amount of pesticide draining from the field to which it is applied to any adjacent ditches or streams. The model uses information on local soil, rock and climatic conditions, combined with pesticide-specific data on representative application rate, how strongly it is held within the soil and how quickly it breaks down.

### **The soils data**

The soil data used are the National Soil Map (NatMap) and spatial polygons of soil associations and the proportion of specific soil series that comprise the polygon. Mapping is at a scale of 1:250,000. Data from soil properties are used to derive a 'soil runoff potential' class based on its hydrological response to rainfall (as indicated from its Hydrology Of Soil Types – HOST – class; Boorman *et al.*, 1995) and its organic matter and clay content as it determines soil adsorption potential. The methods for allocating soils to a runoff potential class are described in Hollis, 1991.

### **The climatic data**

The climatic parameter used by the model is the duration of the climatic field capacity period (FC Days). This is used to determine the average length of time between pesticide application and the rainfall event that triggers soil drainage. Data on FC days at 5 km x 5 km grid resolution has been calculated for England & Wales as a component of the 'agro-climatic databases (Jones & Thomasson, 1985) held in the NSRI/ Defra Land Information System (LandIS).

### The pesticide data

The pesticide fate model used requires information on how quickly the compound breaks down in the soil (the pesticide half life in soil, or  $T_{1/2}$ ) and how strongly it is held within the soil against drainage (the soil sorption coefficient, normalised for organic carbon content, or Koc). Realistic 'best-case' values for Koc (maximum sorption) and  $T_{1/2}$  (minimum half life) were derived from data held within the NSRI – Severn-Trent Water Catchment Information System (CatchIS, Breach *et al*, 1994). These data comprise a realistic range of values for the Koc and half life of individual compounds compiled from various published sources and verified with the companies who registered the compounds for use in the UK.

Chemical	Koc	$T_{1/2}$
Atrazine	174	17
Chlorotoluron	384	30
Diuron	534	30
Isoproturon	235	13
MCPA	60	6
Mecoprop-P	40	7
Propyzamide	990	16
Simazine	377	20
Trietazine	400	50

### The pesticide fate model

The pesticide fate model used to produce the vulnerability maps is based on an adaptation of the Surface Water Attenuation Model (SWAT) (Brown & Hollis, 1996).

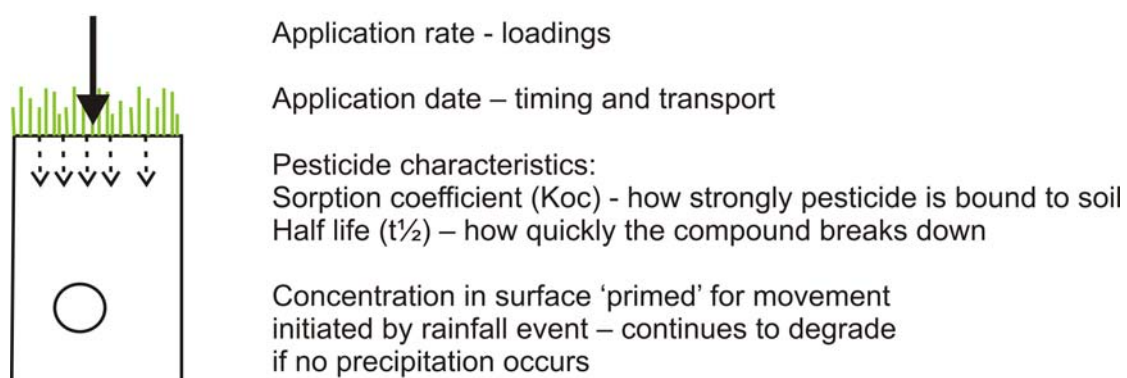
The model predicts the average pesticide concentration entering streams in the peak drainage from fields following the first rainfall event to initiate drainage after pesticide application. This concentration is calculated by assuming that, during the rainfall event, all rainwater interacts with the upper part of the topsoil by displacing and mixing with the mobile water fraction. It is this displaced and diluted soil water fraction that moves rapidly to streams, either via surface flow or through the soil fissure/macropore systems and field drains, if present. During this process, some additional attenuation of pesticide is likely to occur as a result of sorption onto soil aggregate surfaces. The predicted drain concentration is thus calculated from the predicted solute concentration within the upper 1 mm of soil at the time of the rainfall event adjusted using a dilution

factor to account for displacement and mixing by rain and a partition factor to account for pesticide sorption during transport to drains.

### *Pesticide concentration in the topsoil water fraction during the runoff event*

The concentration of pesticide in the topsoil water fraction is calculated using the Attenuation Factor concept. The model assumes that as soon as it impacts at the soil surface, the applied pesticide penetrates to a depth of 2 mm and then begins to move down through the topsoil. The depth to which the pesticide penetrates during the time between application and the rainfall event that initiates run-off (time,  $t$ ) is calculated from the length of this time, the average soil water flux during this time (assuming the soil is at or near to field capacity) and a pesticide-specific retardation factor that takes into account sorption and volatilisation during pesticide flow. The average pesticide solute concentration within this depth is then calculated from the initial mass of pesticide impacting at the surface divided by the total water content of the topsoil within the calculated depth of solute penetration, multiplied by an attenuation factor that takes into account the degradation that has occurred during the solute transport time ( $t$ ). These calculations assume a first order degradation relationship with the pesticide half life and also include a time-dependent increase in sorption. The mass of pesticide impacting at the surface is calculated from the pesticide application rate adjusted to take into account any likely crop interception.

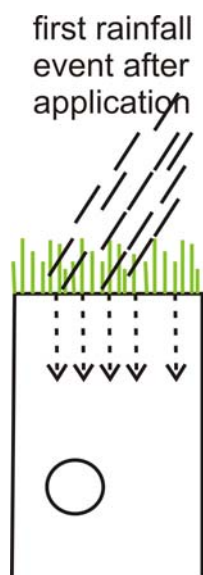
pesticide  
application



### *Period between pesticide application and the first rainfall event initiating runoff*

The interval between pesticide application and initiation of run-off is a function of both soil type and climate. Soil types determine the amount of rainfall that is necessary to

initiate run-off and climate determines the relative frequency of such an event. Using the Hydrology of Soil Types (HOST) classification, soils are grouped into five classes (S1 to S5) according to their predicted Standard Percentage Run-off (SPR) value. Soils with the highest SPRs require only small volumes of rain to initiate run-off whereas those with the lowest SPRs require large volumes of rain. Rainfall volumes of 5, 7, 10, 18 and 20 mm have been selected to reflect the increasing infiltration capacity of soil classes with increasingly lower SPRs. By statistical analysis of daily weather data sets, the average return periods for each of these rainfall events within each climatic area defined by the duration of their field capacity period, has then been calculated. These calculated return periods range from 1 to 10 days for S1 soils with greater than 50 % SPR, to 12 to 115 days for S5 soils with less than 10 % SPR. These values are used within the model to define the average time duration between pesticide application and the first rainfall event that initiates run-off.

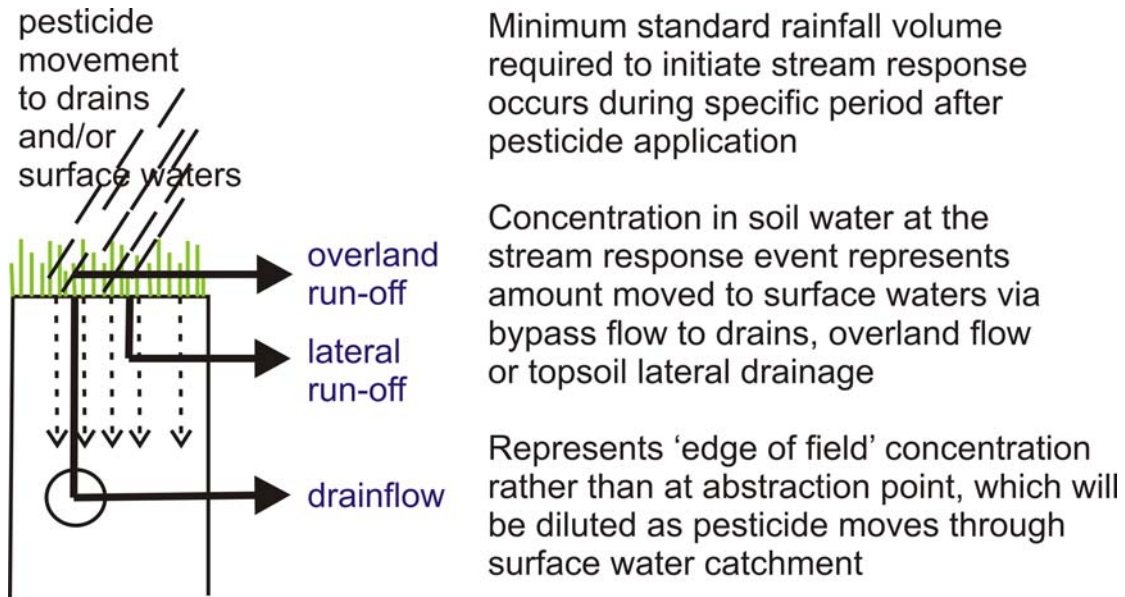


**Soil type** - run-off characteristics- how much rainfall required to initiate soil water movement

-Soil standard percentage run-off values using hydrology of soil types system (HOST)  
 -High SPR= limited infiltration capacity and smaller amount of rainfall needed to initiate run-off

**Climate** – frequency of such a rainfall event occurring at the time of application to initiate run-off

-Climatic areas defined by duration of field capacity (indicator of length of time soils are 'wetted-up')  
 -Return periods calculated for soil type indicating time required between application and run-off



*Output from the model*

The model calculates the pesticide concentration for each of the individual soil series that are defined by the soil spatial data. The calculated pesticide concentration is thus assumed to apply to all the area represented by the soil series. The calculated value represents the concentration of pesticide draining from individual fields which contributed to the surface water network. Because of the uncertainties relating to the derivation of input parameters to the model and the fact that concentrations of pesticide draining from individual fields are likely to be subject to dilution and dissipation within the surface water network, the predicted concentrations are not treated as absolute values but are translated into one of three relative risk categories: Low, Medium or High. The range of concentrations associated with each class is as follows:

*Low* 0 – 1  $\mu\text{g l}^{-1}$

*Medium* 1.01 – 4  $\mu\text{g l}^{-1}$

*High* > 4  $\mu\text{g l}^{-1}$

**Interpretation of the map**

When interpreting the maps it is important to remember certain assumptions on which the risk assessment is based.

1. The mapped areas are independent of land use and crop data. The map represents the combination of soil and climate characteristics that produce vulnerable situations with high runoff potential giving rise to enhanced pesticide

concentration in drainage waters at 'edge of field'. Therefore, the model assumes that the pesticide is applied over the whole area (unless it non-agricultural eg 'urban' or 'upland peat') and gives vulnerability should the pesticide be applied to the specific area. Assessment of actual cropping and land use should be sought from agronomists in the catchment and used in association with the vulnerability maps.

2. As the maps are based on the National Soil Map at 1: 250,000, care should be taken when extrapolating the assessment to specific smaller scale areas (eg. fields) within the map units displayed on the map. For smaller scale areas more detailed characterisation of soil types within certain fields would need to be undertaken.
3. As climate data is indicative of meteorological conditions over long-term periods it represents areas of agroclimatic significance that determine appropriate cropping and land use. The climatic data used to in the model to determine events that trigger drainage is representative of 'average' conditions determined from long-term data. Consideration of weather patterns in a specific timeframe within the catchment and observations of drainflow should also be taken into account. There are likely to be some years when drainage is triggered sooner (eg. because of a particularly wet late summer and early autumn) than the period used in the model (giving higher concentrations) as well as some years when it is triggered later (giving lower concentrations).
4. The assessment only takes into account diffuse agricultural sources and assumes best practice. It does not take into account point sources, non-agricultural sources or inputs from bad practice.

The map is thus simply a generalised vulnerability assessment that attempts to integrate the inherent local environmental risk factors (soil and climate) with the risks attached to the pesticide characteristics and the time of application. The risk classes used also try to take into account attenuation of the edge-of field concentrations during transport through the catchment surface water network. Taking into account these assumptions therefore, the classes can be interpreted as follows:

- **Low** risk (coloured blue) indicates that if the pesticide is used on the licensed crops in these areas, the amount draining to surface waters in most years is unlikely to give water quality problems at the abstraction source.
- **Medium** risk (coloured orange) indicates that if the pesticide is used on the licensed crops in these areas, then, in some years the amounts draining to surface

waters are likely to give intermittent local water quality problems at the abstraction source, at least over the late autumn and winter periods.

- **High** risk (coloured red) indicates 'hot-spot' areas within the catchment where the combination of soil rock and climatic conditions create particularly vulnerable environments. If the pesticide is used on the licensed crops in these areas, then it is very likely that the amounts subsequently draining to surface waters will give intermittent water quality problems at the abstract source over the late autumn, winter and, possibly, the spring periods.

### **Interpretation of differences in the vulnerability maps**

The climatic conditions do not vary significantly across the catchment. The area has relatively short duration of field capacity generally between 100 and 120 days with soils wetting up in the late autumn (late November- early December) and drying out in spring in early to mid April.

#### High areas

Soils in high risk areas have high run-off potential due to slowly permeable, seasonally wet fine loamy over clayey (Beccles association) or clayey (Hanslope association) soils. Little rainfall is required to promote pesticide movement via by-pass flow to surface waters during the period when the soils are seasonally wetted up. These soils are the dominant associations in the Waveney catchment.

#### Moderate and low areas

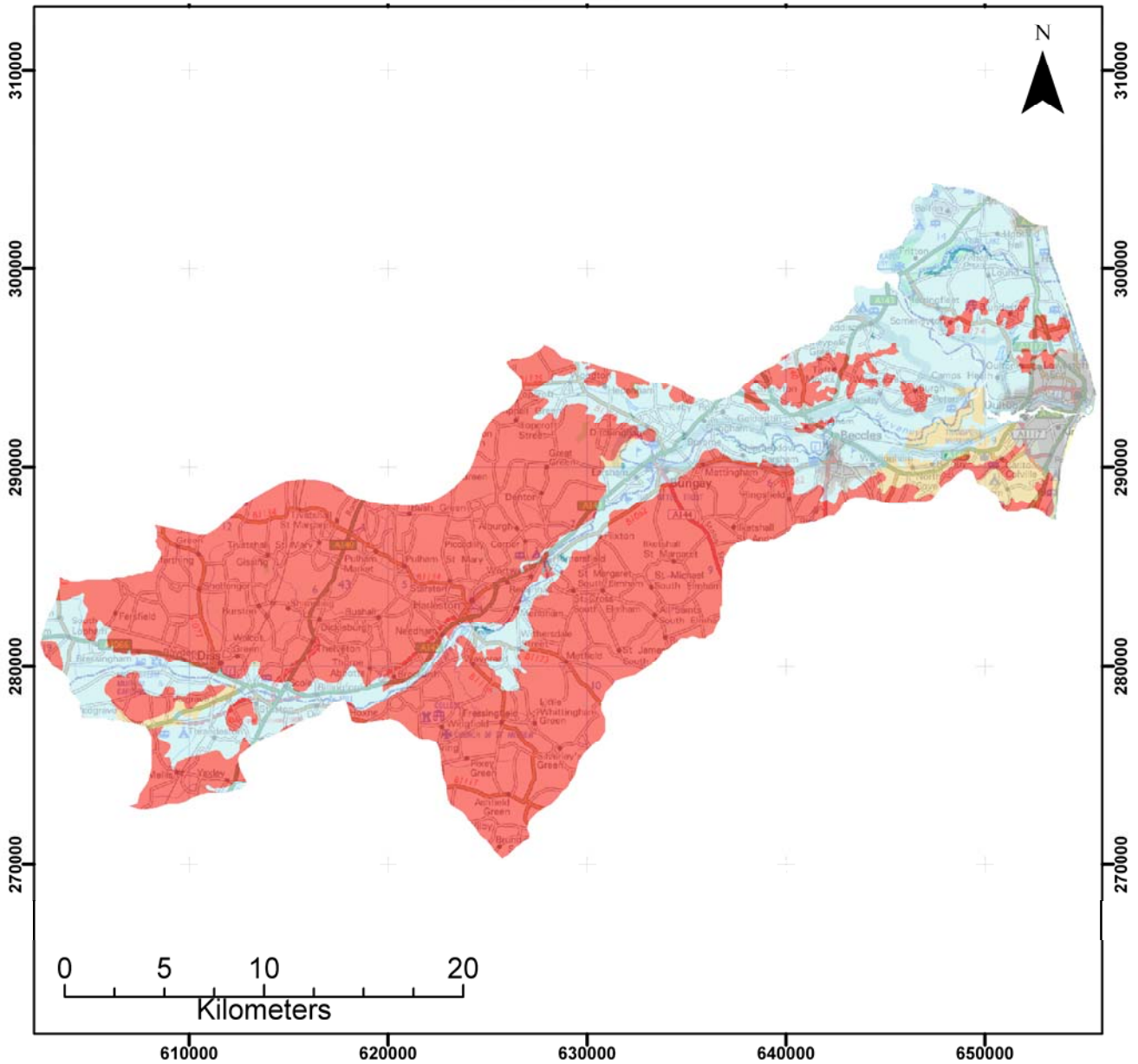
The acidic fen peats abutting the river (Mendham association) have high potential for pesticide attenuation because of high pesticide absorption capacity of the organic matter and hence limit the amount of pesticide reaching surface waters. Freely drained sandy soils (Newport and Wick associations) have low connectivity to surface waters through bypass flow and hence have low run-off potentials. However, due to their low organic matter contents the risk becomes moderate for Chloroturloron, particularly at high application rates, where there is greater potential for the pesticide to pass rapidly through the system with limited attenuation at wet periods. Other brown earth soils with some seasonal waterlogging in the subsoils (Burlingham association) and slowly permeable groundwater gleys that are likely to be drained (Wallasea association) have



moderate run-off potentials but rainfall amounts during wet periods limits initiation of by pass flow to surface waters. The risk becomes moderate in these soils at high application rates for Chloroturloron.

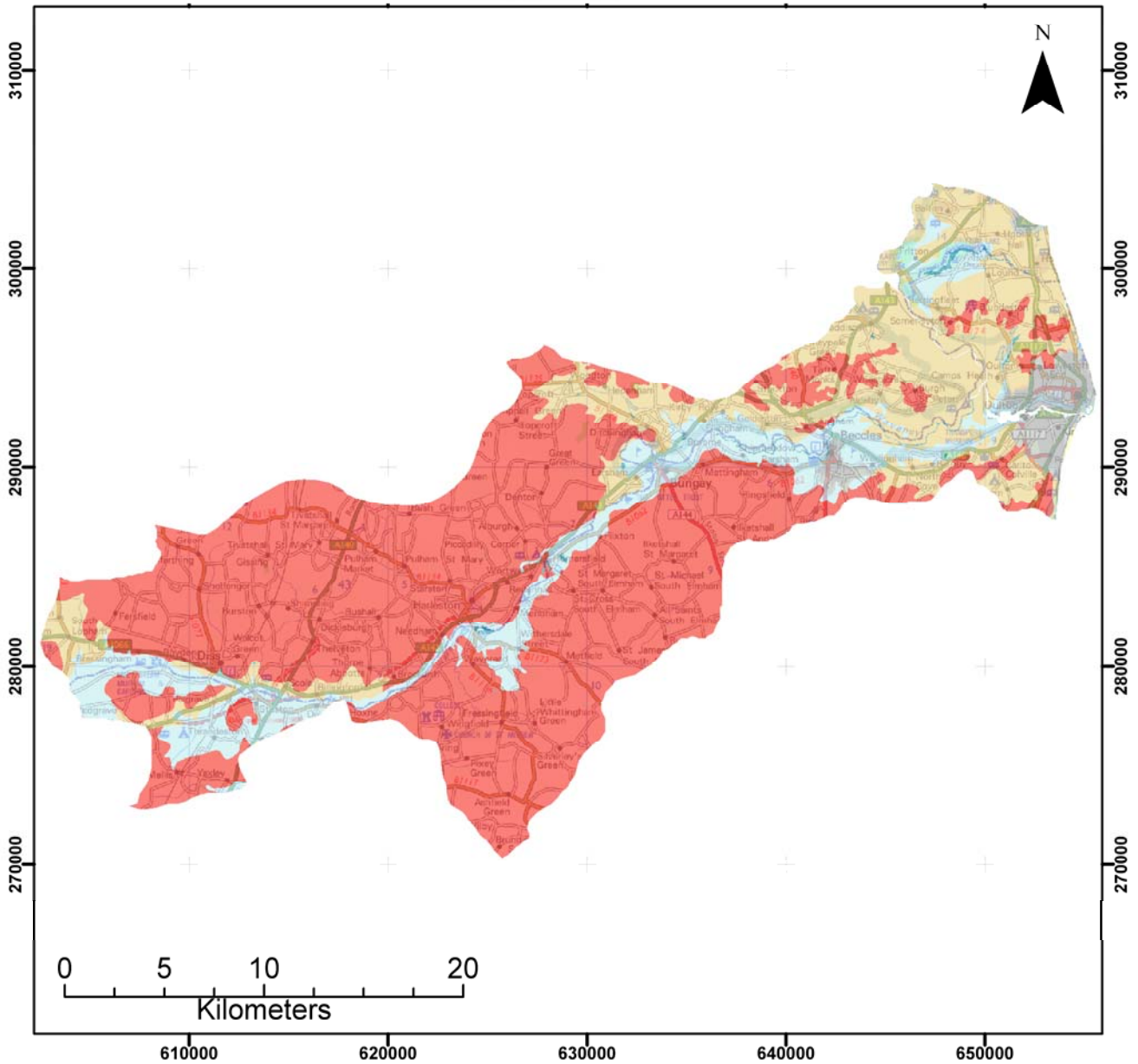
## References

- BOORMAN, D.B., HOLLIS, J.M. & LILLY, A. (1995). *Hydrology of Soil Types: A hydrologically-based classification of the soils of the United Kingdom*. Institute of Hydrology Report No. 126, Wallingford, UK. 137 pp.
- BREACH, R.A., PORTER, M.J., COURT, A., HOLLIS, J.M., KEAY, C.A. & HALLETT, S.H. (1994). CatchIS - A new computer based catchment planning and information system to assess the vulnerability of surface and groundwater catchments to contamination. In: *AWWA Proceedings 1994 Annual Conference: Water Quality, June 19-23, 1994, New York, USA*. pp. 545 - 562.
- BROWN, C.D. & HOLLIS, J.M. (1996). SWAT - A semi-empirical model to predict concentrations of pesticides entering surface waters from agricultural land. *Pesticide Science* **47**, 41-50.
- HOLLIS, J.M. (1991). Mapping the vulnerability of aquifers and surface waters to pesticide contamination at the National/Regional scale. In: *Pesticides in Soils and Water*. (Ed. A. Walker), BCPC Mono. No. 47; 165 - 174.
- JONES, R.J.A. & THOMASSON, A.J., (1985). *An Agroclimatic Databank for England & Wales*. Soil Survey Technical Monograph No. 16. Harpenden (45 pp.)



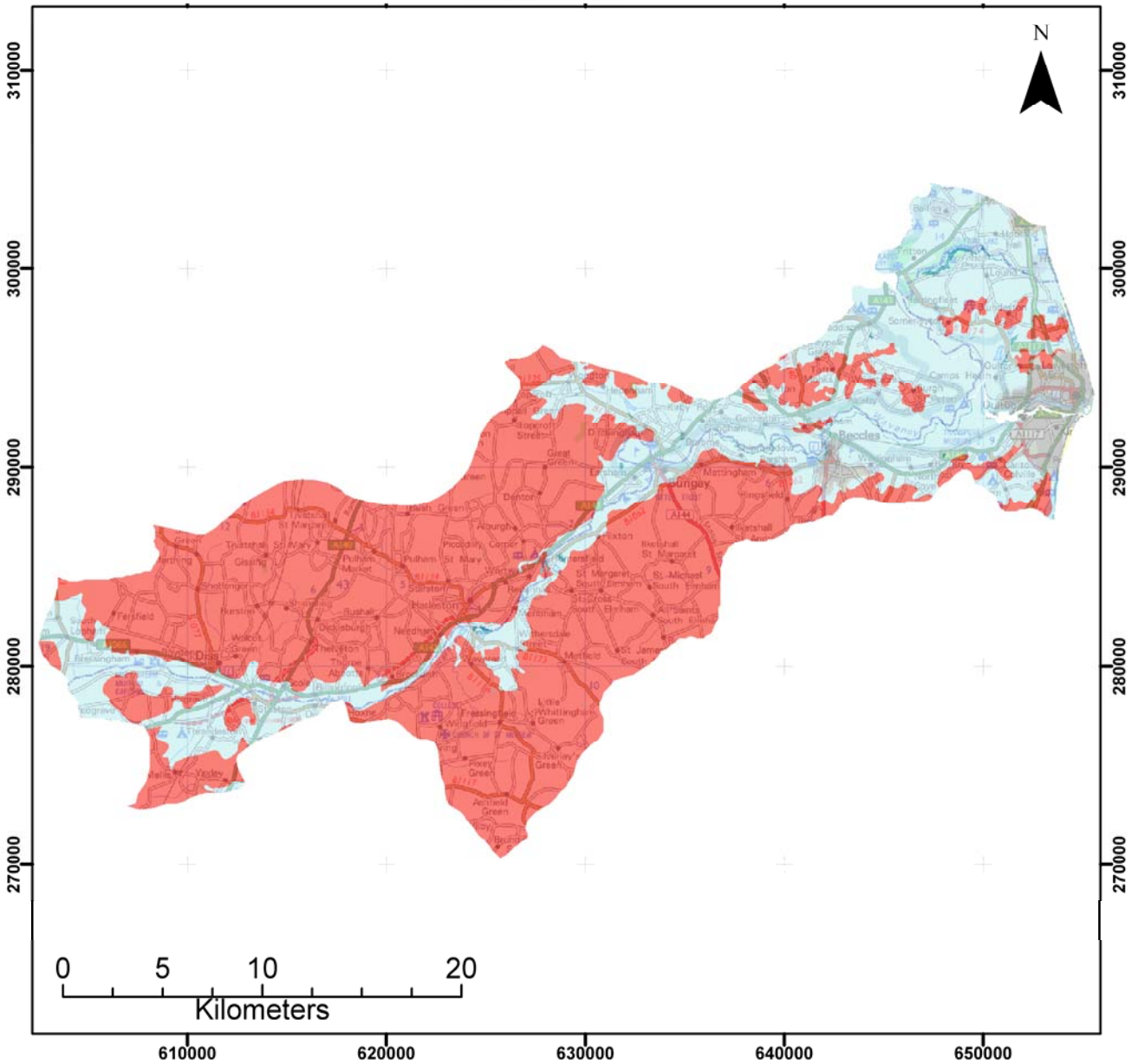
### Surface Water Hotspots - Potential risk in Waveney Chlorotoluron @ 2.0 kg/ha

- |  |   |  |   |
|--|---|--|---|
|  Low      |  High  |  Peat           |  Water |
|  Moderate |  Urban |  No Risk - Soil |   |



### Surface Water Hotspots - Potential risk in Waveney Chlorotoluron @ 3.5 kg/ha





### Surface Water Hotspots - Potential risk in Waveney Isoproturon @ 1.5 kg/ha

